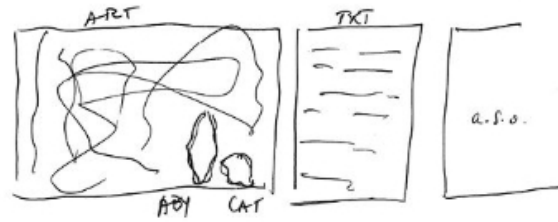


INUTILE & FÉCONDE

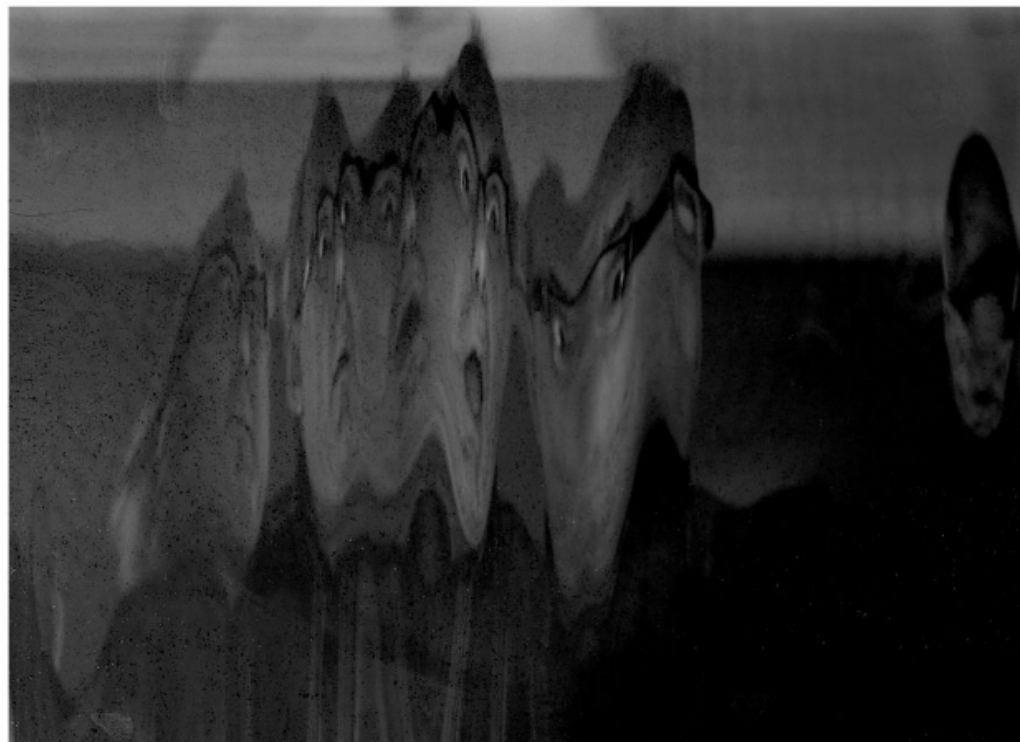
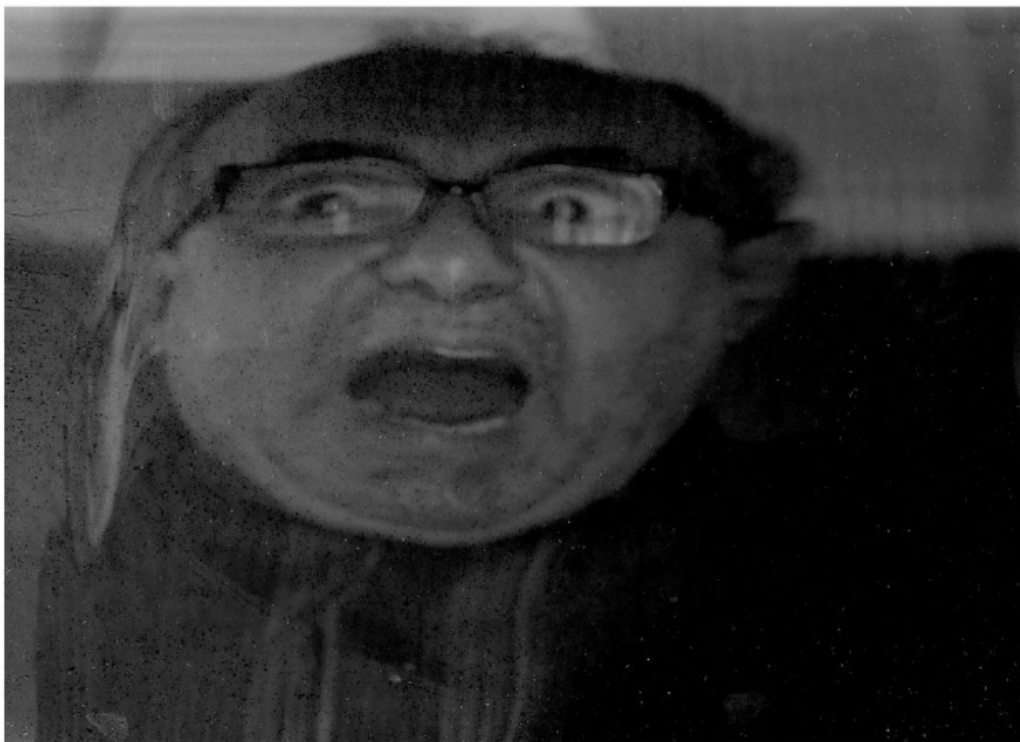


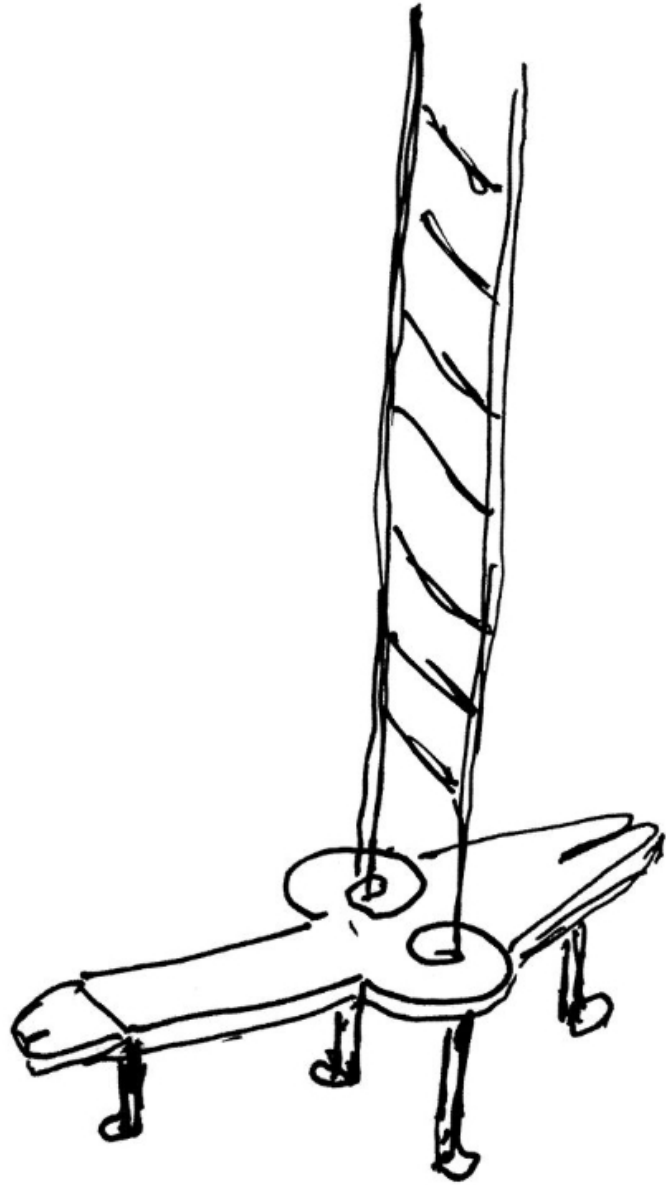
RELENTLESS WANDERER LEAVING  
~~WITH HIS~~ ~~BEHIND~~ A SILVERY PATH  
BEHIND, WHO CONNECTS THROUGH  
THIS PASSIONATE SLIMY KISS  
AT THE PICTURES ON THE  
WALLS OF THE DARK ROOM  
OF KNOWLEDGE

## Scan

19.09.2017

În atelierul artistului  
In the Artist's Studio  
Amsterdam





ALZIMED



Sculptură, bronz / Sculpture, bronze, 15 × 7 × 3 cm max., 2017





Adăpost, masă + scaun / Shelter, table + chair, 2019



Totem, sobă metalică, stâlp de lemn / metal stove, wood pillar, 170 × Ø 50 cm, 2017

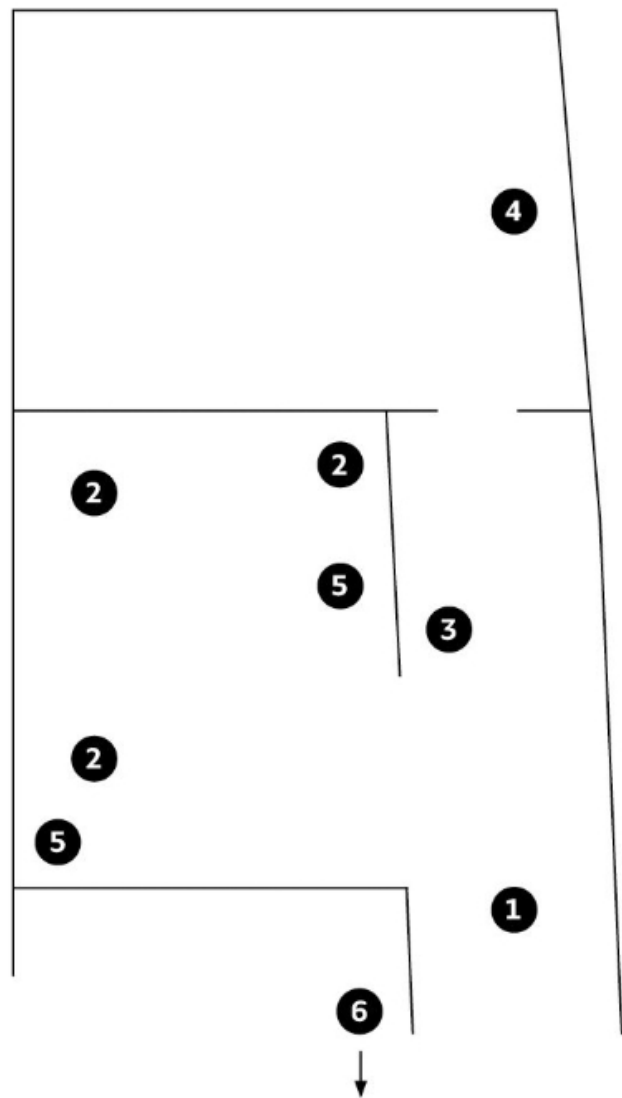








Masă șchioapă, medicamente, pălincă, obiecte paterne, mătănii / Crippled table, medicine, plum brandy, paternal objects, rosary



- 1** pp. 26–27 Obiect androgin / Androgynous object
- 4** pp. 28–29 Masă șchioapă, Obiect patern / Crippled table, Paternal object
- 2** p. 30 Peisaj cu spirite/Landscape with spirits
- 3** p. 31 Prapor / Religious Banner
- 5** pp. 32–33 Obiecte androgine / Androgynous objects
- 4** p. 34 Obiect patern / Paternal object
- 6** p. 36 Obiect matern / Maternal object
- 6** p. 37 Obiect matern / Maternal object & video (Natură moartă, sec. 20 – Pere înghețate / Still life 20th c. – Poire gelée, 2013)

